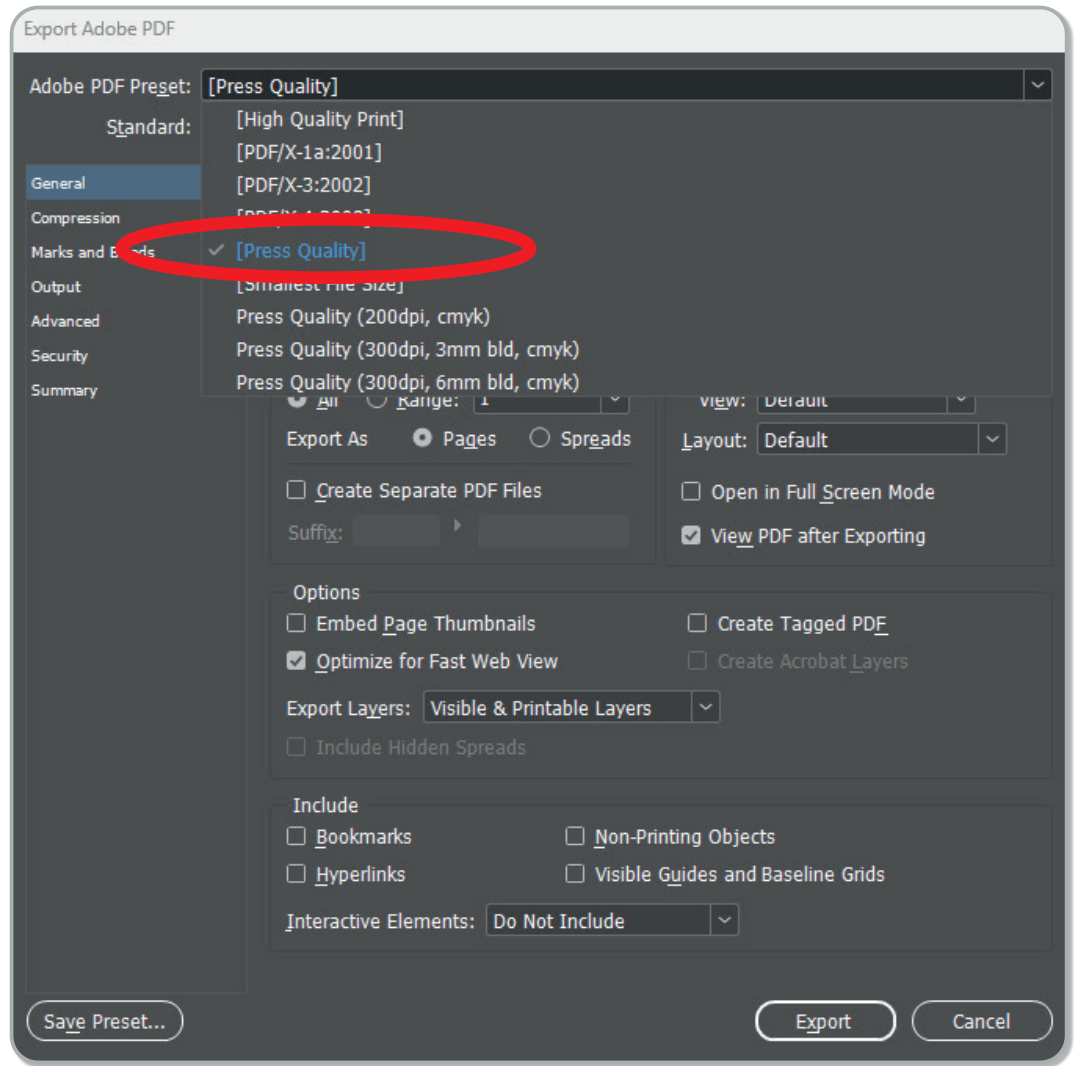
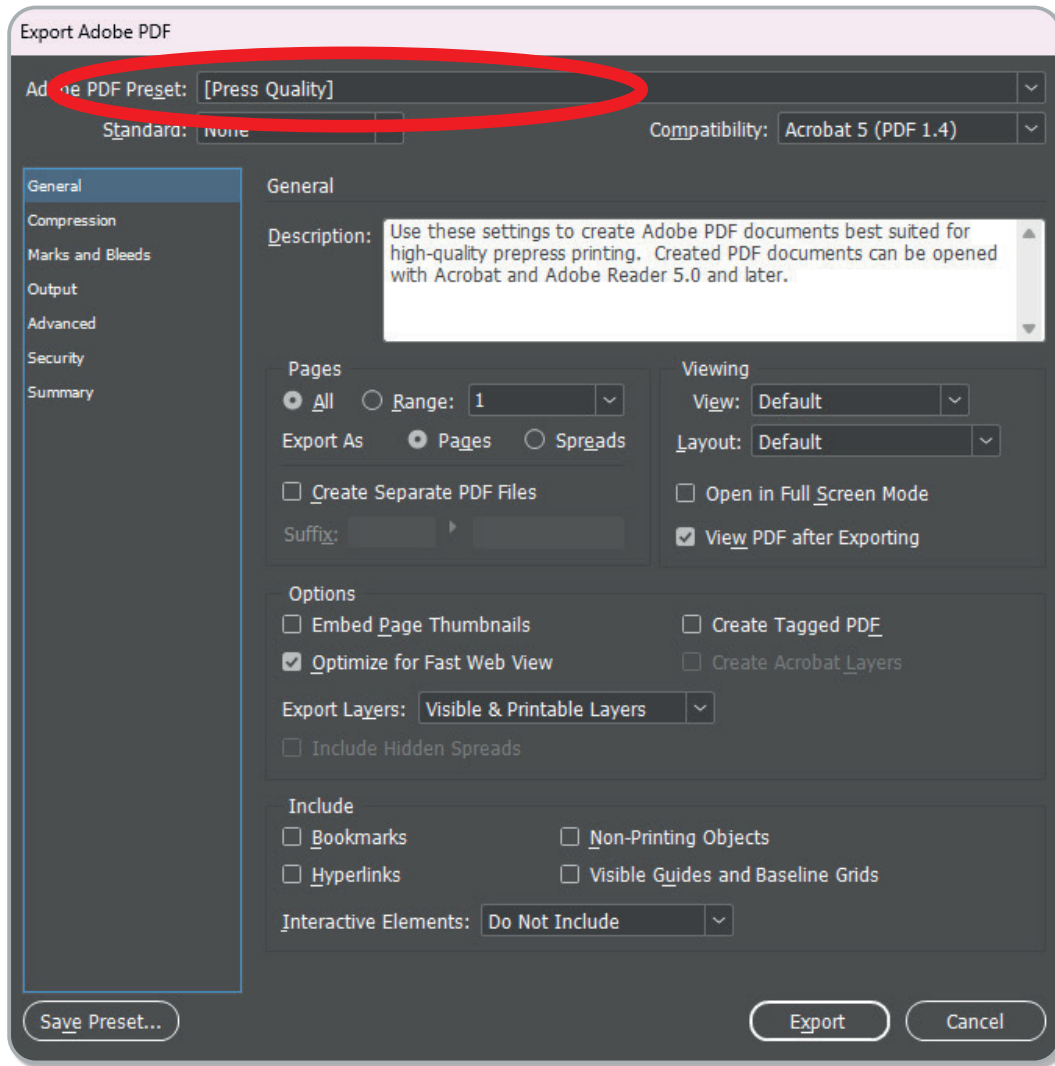


Step 1

Indesign:- Exporting 'Press Ready' Artwork for Printing:

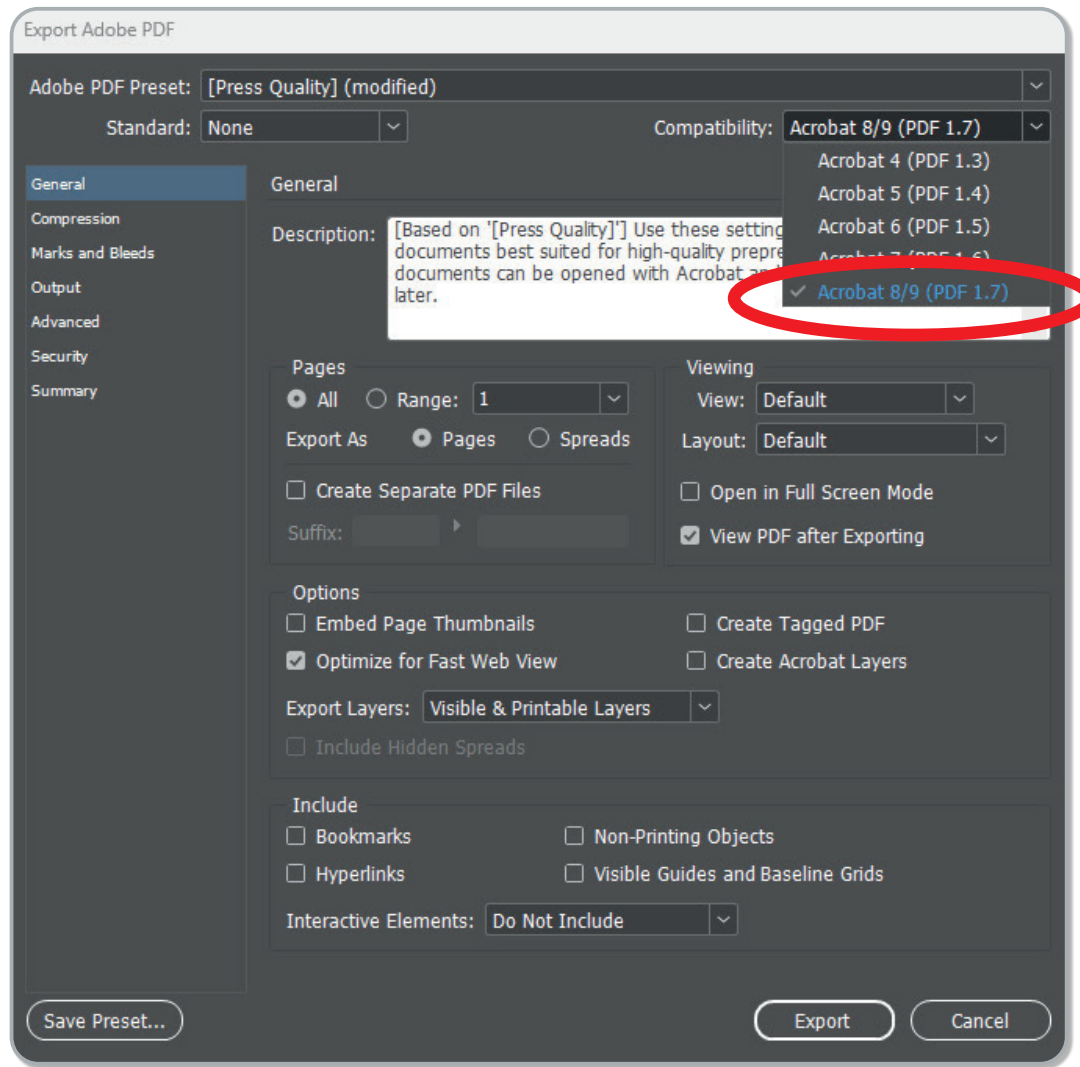
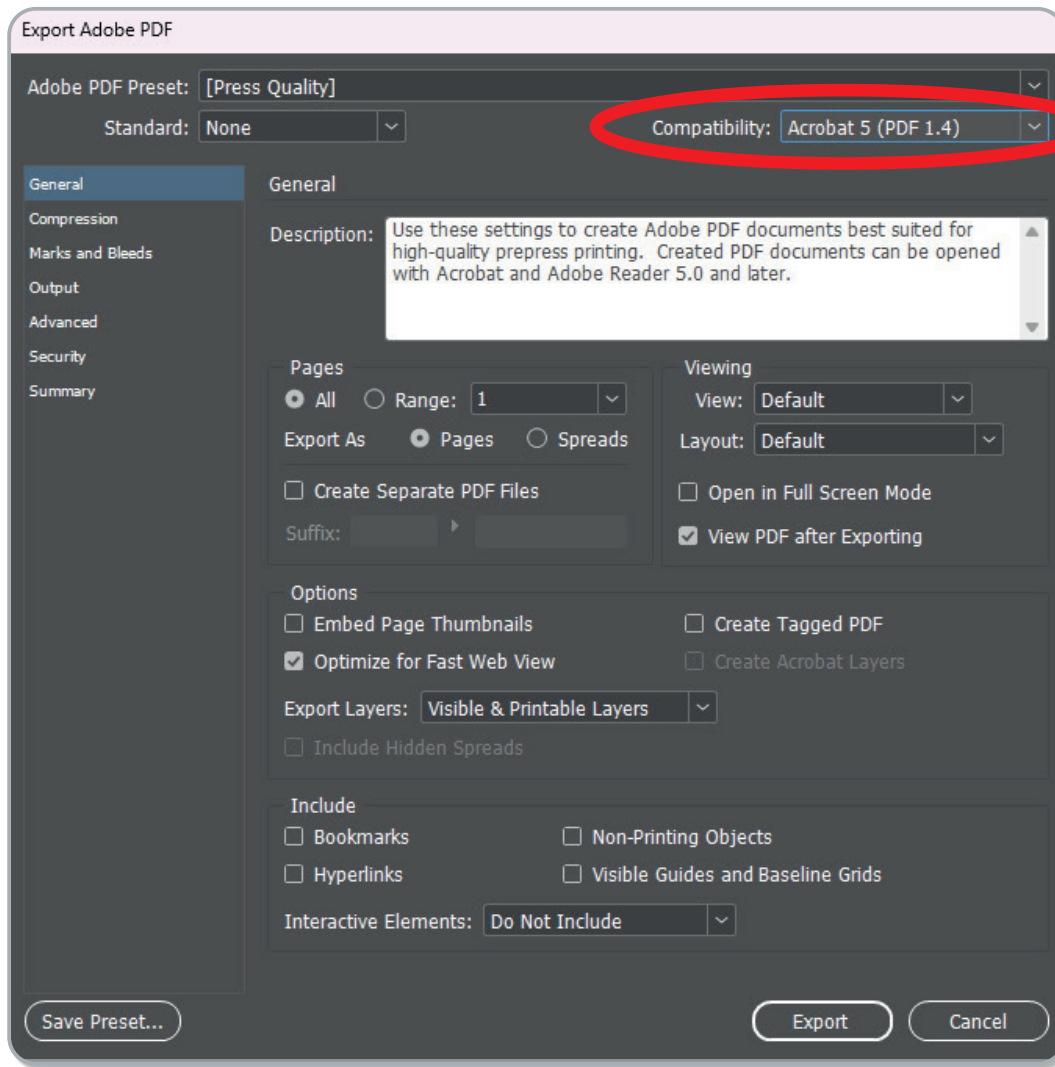
When creating a PDF for Print - Always use the **'Press Ready'** preset to begin with and not the 'High Quality' preset. High Quality retains RGB colour, while the Press Ready option automatically converts all RGB to CMYK for production.

Select **'Press Quality'** from the **'Adobe PDF Preset'** pull down menu as shown below.



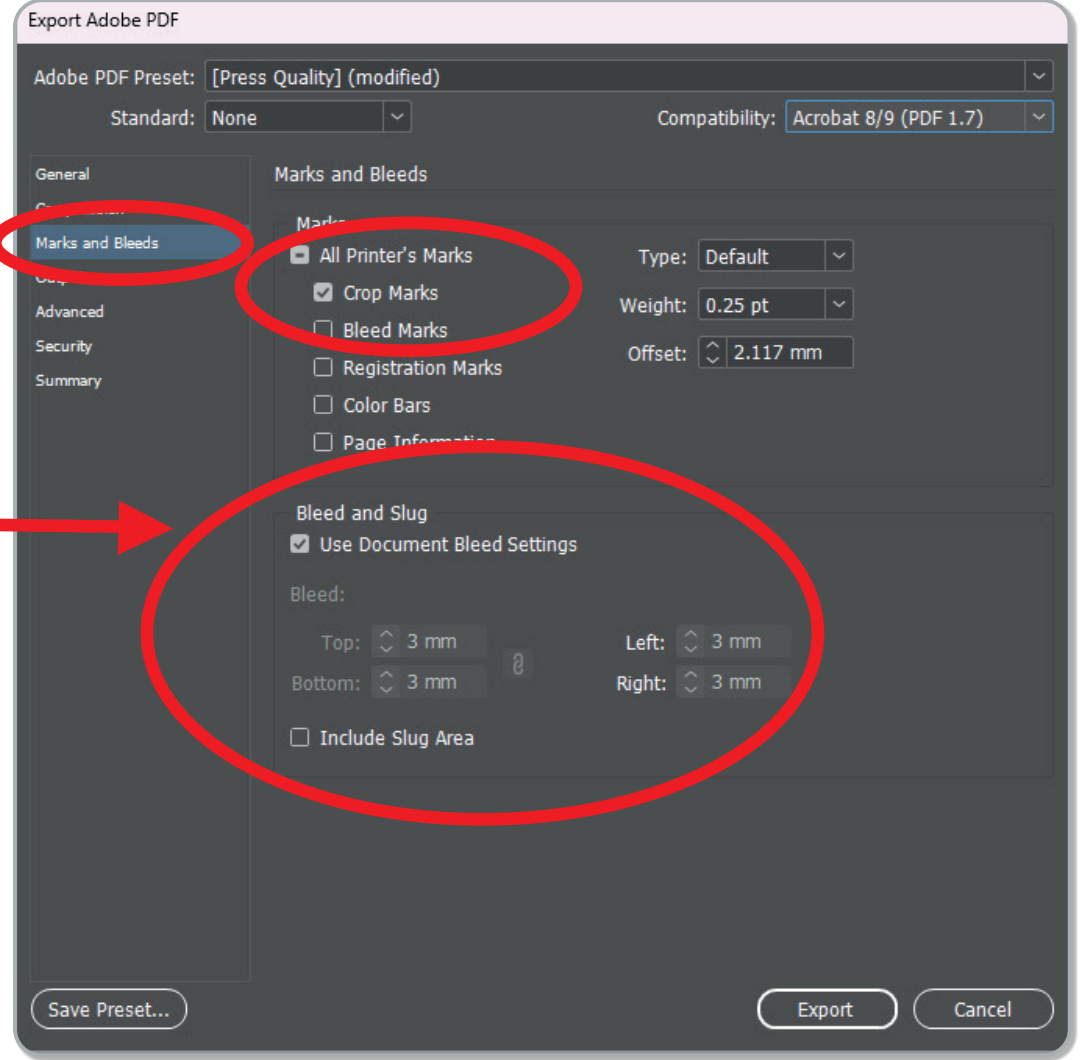
Step 2

Select **'Acrobat 8/9'** from the **'Compatibility'** pull down menu as shown below.

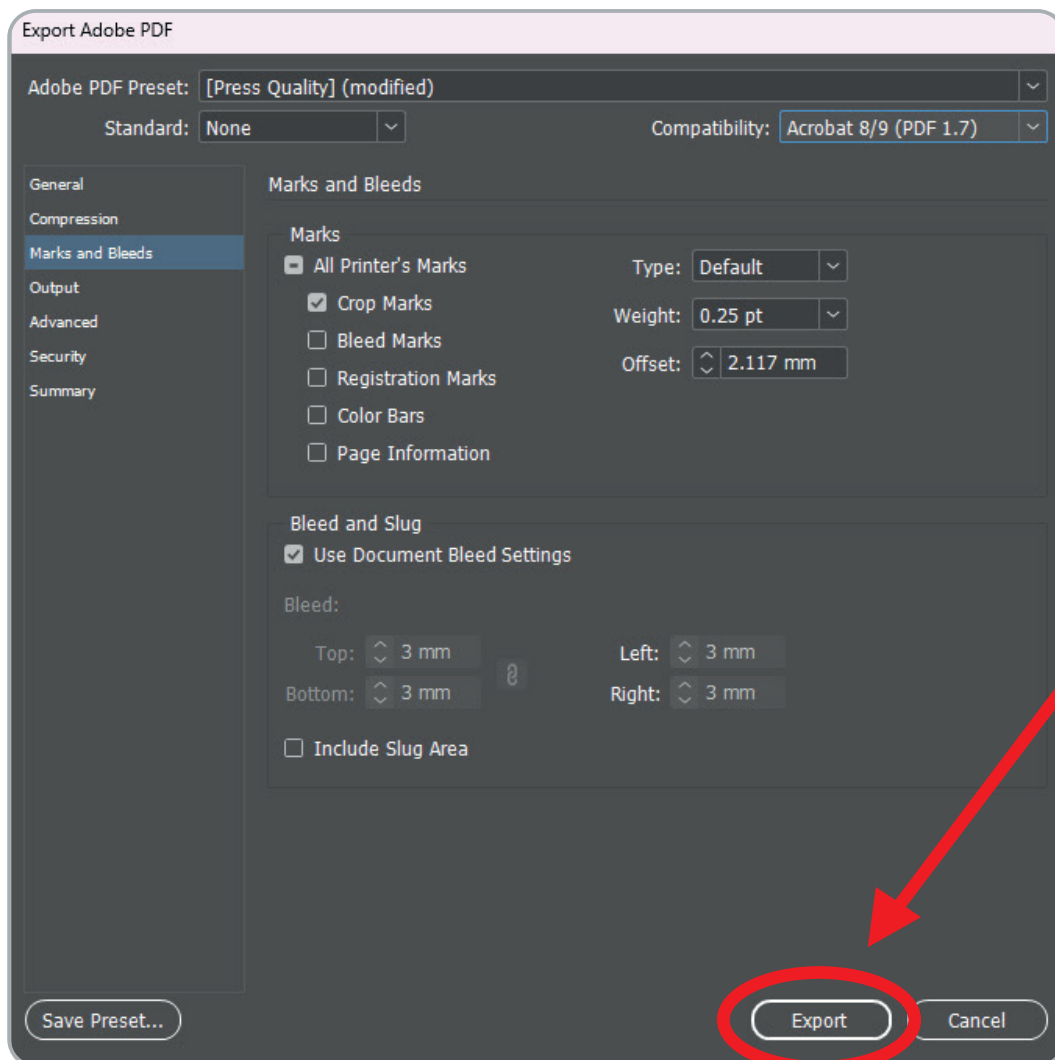


Step 3

- Select the **'Marks and Bleeds'** tab from the left hand list as shown below.
- Select only the **'Crop Marks'** from the available selections underneath the 'Marks and Bleeds' heading.
- To include bleed in your file export - Select the **'Use Document Bleed Settings'** as indicated if you have set up the bleed in your original document settings, or alternatively you can add in your own desired bleed settings by entering them beside the 'Top / Bottom / Left / and Right' sections.



Step 4



'Export' to PDF